

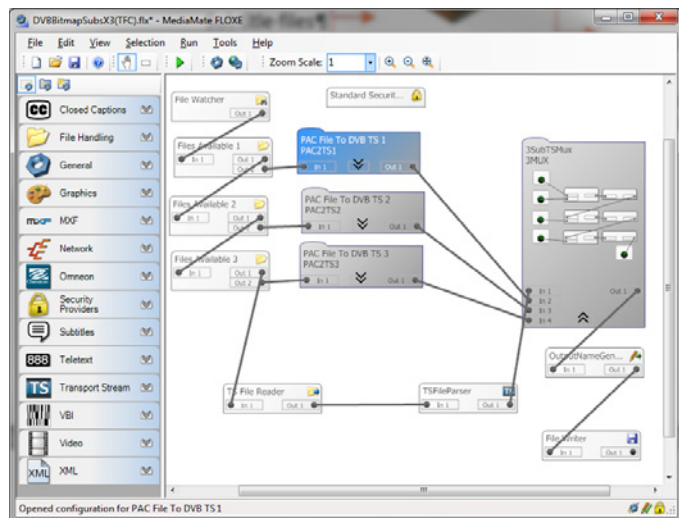


MediaMate

MediaMate is a software solution for subtitle encoding into media files, subtitle decoding from media files and/or subtitle format conversion - designed to fit into any modern workflow.

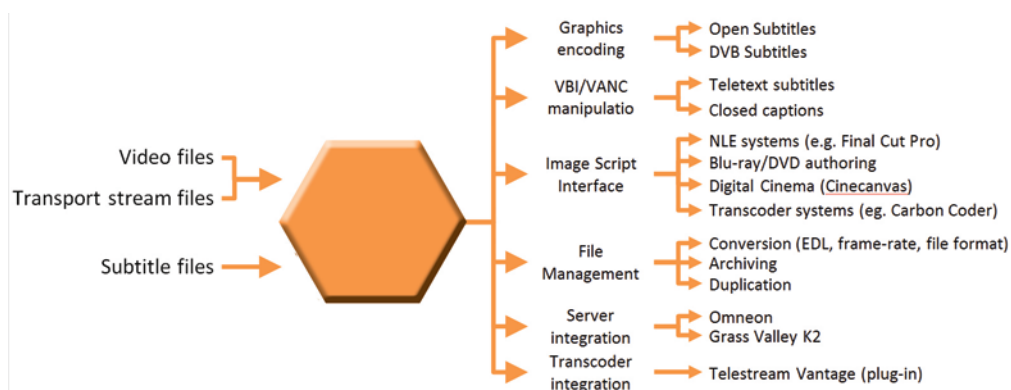
MediaMate builds on Screen's expertise with the market-leading Polistream system for linear subtitle insertion processes to provide the same quality and capabilities in the file-based domain – and that could go beyond subtitling too.

- Unattended batch processing
- Set-and-forget configuration
- Efficient handling of large media files for minimum turnaround time*
- Multiple simultaneous and sequential processes for complex workflows
- Easy to upgrade for new workflows

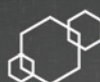


MediaMate is a flexible solution in which individual software components are combined to create an end-to-end workflow model. New components and models are easily added as client requirements evolve, without impacting the core software or existing workflows.

MediaMate can be used by broadcasters and VOD operators to streamline workflows, reducing turnaround times and enabling efficient delivery for more platforms. For subtitling and post-production facilities MediaMate allows efficient file-based operations to replace remaining tape transport processes with the flexibility to service the changing demands of current and future clients. Although Screen's heritage is in subtitling, MediaMate's functionality can be extended into other areas too.



* The time taken to process jobs using MediaMate can be much faster than the equivalent real-time process, with time savings of up to 90%, while avoiding the need for labour intensive and time-consuming tape handling and expensive hardware. However performance varies with the particular workflow and hardware specifications and for large file operations fast disk access is essential.

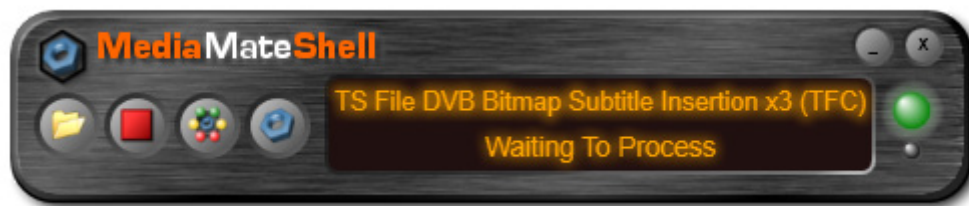




File-Based Workflows

Typical workflows supported by MediaMate include

- encoding PAC/EBU-STL subtitle file as:
 - o DVB bitmap or teletext subtitles into any transport stream file for VOD applications
 - o Open (burnt-in) subtitles, VBI teletext subtitles or EIA608 closed captions into IMX-50 (MPEG-2 I-frame)
 - o VANC/OP47 teletext subtitles as a SMPTE 436 data track in MXF
- create WYSIWYG open subtitle WMV previews in any resolution
- create image based exports for Cinecanvas, DVD/Blu-ray and video editing systems
- convert between subtitle file types (e.g. PAC to TTML)
- modify a subtitle file based on an EDL
- extract subtitle data from various media file formats to create a subtitle file or to insert into an alternative media file



MediaMate Solo

A cost-effective solution for occasional use, MediaMate Solo is restricted to manually initiated one-shot processing and single stream subtitle insertion workflows.

MediaMate Pro

The modular MediaMate Pro version can be configured for any supported workflow (insertion, extraction and/or conversion) with full watch folder automation for set-and-forget operations.

MediaMate Plug-In

Many modern workflows involve much more than subtitling of course, with various media transcodes being required for delivery to multiple output formats and platforms. This is where MediaMate comes into its own as a Plug-In to media repurposing and transcoding systems such as Telestream's Vantage. As well as a selection of the most popular workflows described above this solution also allows open subtitles to be burnt-in to almost any media file format supported by Vantage (including long-GOP MPEG2 and H.264 transport stream files for instance).

